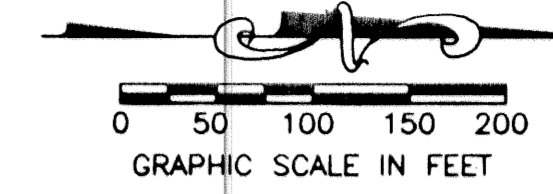


# QUAIL RIDGE PLAT NO. 22, A PUD

BEING A REPLAT OF LOTS 13 AND 14  
AND A PORTION OF THE GOLF COURSE  
PLAT NO. 20 QUAIL RIDGE  
PLAT BOOK 40, PAGES 175 AND 176  
SITUATE IN SECTION 30, TOWNSHIP 45 SOUTH, RANGE 43 EAST  
PALM BEACH COUNTY, FLORIDA  
FEBRUARY, 2002 SHEET 2 OF 3



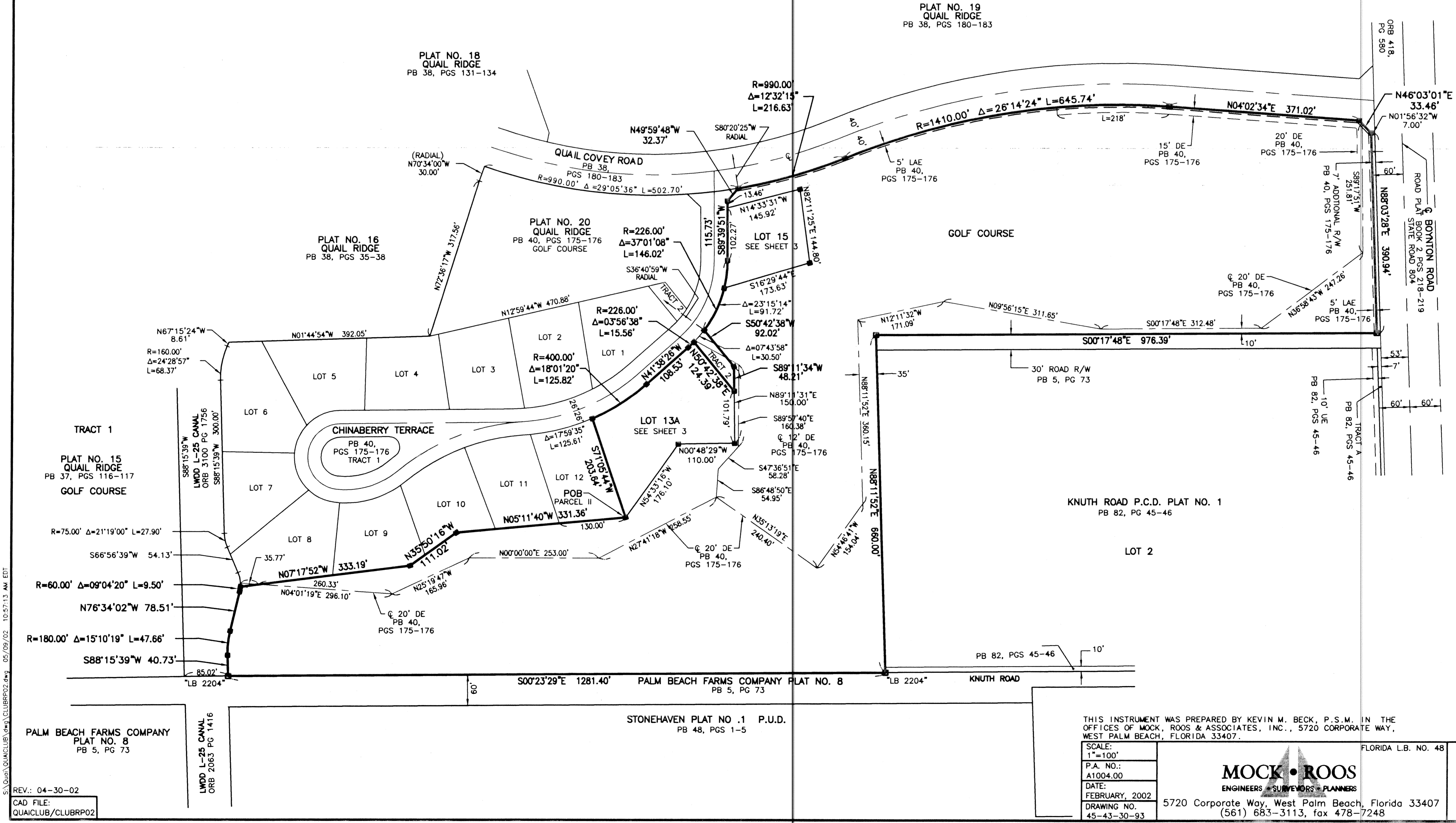
STATE OF FLORIDA  
COUNTY OF PALM BEACH  
THIS PLAT WAS FILED FOR  
RECORD \_\_\_\_\_ DAY OF \_\_\_\_\_  
AD. 2002 AND DULY RECORDED  
IN PLAT BOOK \_\_\_\_\_ ON PAGES  
\_\_\_\_\_ AND \_\_\_\_\_  
DOROTHY H. WILKEN, CLERK  
BY: \_\_\_\_\_, D.C.

### LEGEND

- Δ CENTRAL (DELTA) ANGLE
- CH CHORD
- L ARC LENGTH
- CL CENTERLINE
- LAE LIMITED ACCESS EASEMENT
- PB PLAT BOOK
- PG(S) PAGE(S)
- POB POINT OF BEGINNING
- POC POINT OF COMMENCEMENT
- R RADIUS
- R/W RIGHT OF WAY
- PERMANENT REFERENCE MONUMENT  
SET LB 048(4" X 4" CONCRETE)
- PERMANENT REFERENCE MONUMENT  
FOUND LB 1552 (UNLESS OTHERWISE NOTED)
- LWDD LAKE WORTH DRAINAGE DISTRICT

CIRCUIT COURT SEAL

PALM BEACH FARMS COMPANY PLAT NO. 8  
PB 5, PG 73



SUBDIVISION Quail Ridge  
BOOK 95  
FLOOD ZONE B  
QUAD # 20  
SE  
TAZ 490  
PUD NAME Quail Ridge Plat # 22  
PAGE 68  
FLOOD MAP # 190B  
ZONING AR  
ZIP CODE 33456  
A.P.U.D.

S:\Quail\CLUB\CLUBRPO2.dwg 05/09/02 10:57:13 AM EDT

REV.: 04-30-02  
CAD FILE:  
QUAICLUB/CLUBRPO2

THIS INSTRUMENT WAS PREPARED BY KEVIN M. BECK, P.S.M., IN THE  
OFFICES OF MOCK, ROOS & ASSOCIATES, INC., 5720 CORPORATE WAY,  
WEST PALM BEACH, FLORIDA 33407.

SCALE:	1"=100'
P.A. NO.:	A1004.00
DATE:	FEBRUARY, 2002
DRAWING NO.:	45-43-30-93

FLORIDA L.B. NO. 48

**MOCK • ROOS**  
ENGINEERS • SURVEYORS • PLANNERS

5720 Corporate Way, West Palm Beach, Florida 33407  
(561) 683-3113, fax 478-7248

SHEET 2 OF 3

**QUAIL RIDGE PLAT NO. 22**  
BEING A REPLAT OF LOTS 13 AND 14  
AND A PORTION OF THE GOLF COURSE  
PLAT NO. 20 QUAIL RIDGE  
PLAT BOOK 40, PAGES 175 AND 176  
SITUATE IN SECTION 30,  
TOWNSHIP 45 SOUTH, RANGE 43 EAST  
PALM BEACH COUNTY, FLORIDA